

**CLINICAL RESEARCH
CENTER**



VITAMEDICUM MEDICAL CENTER

TABLE OF CONTENTS

About the Center	03
Staff, Quality	04
Contracting and Negotiation Timelines, Lab Tests	05
Diagnostic imaging, Site Equipment	06
Site Equipment	07
Patient Recruitment	08
Contact	09



ABOUT THE CENTER



Vitamedicum Medical Center – Clinical Research Center was co-founded by Paweł Wrona, MD, MBA, a neurology specialist with over 10 years of experience in conducting clinical trials in all phases. Dr. Wrona has participated in more than 100 clinical studies in neurology, serving as Principal Investigator, Sub-Investigator, and Rater. For many years, he worked at the Department of Neurology in the University Hospital in Kraków, overseeing and developing clinical trials in neurology. As part of the international FACILITATE project (European Union’s Horizon 2020 grant), he co-created a prototype process for returning clinical trial data to participants, ensuring legal compliance and integrating participants’ perspectives.

Vitamedicum Medical Center – Clinical Research Center was created out of a passion for medicine, a desire to help patients, and a dedication to clinical trials. It is a place where patients receive the highest level of care, and the quality and reliability of conducted studies meet equally high standards, ensuring safety, professionalism, and full team involvement at every stage of the research process.



Excellent patient care



High standards and reliability



Educational initiatives

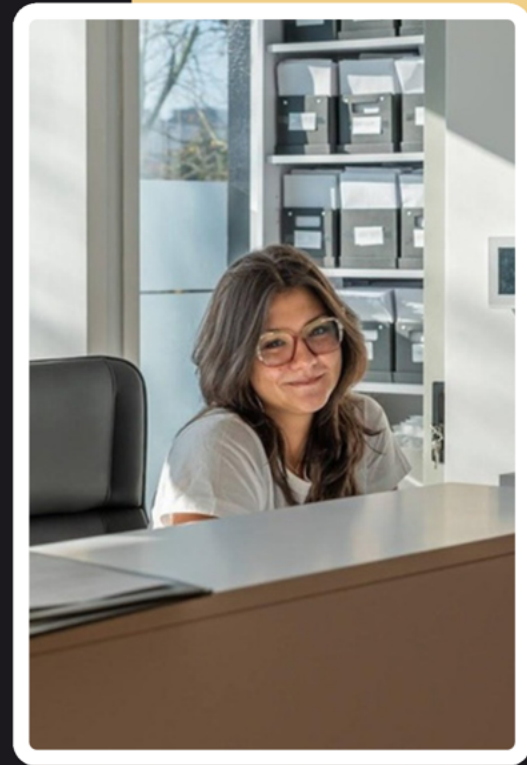
The Center also conducts numerous educational and informational activities, including cooperation with patient organizations, participation in webinars, conferences, and patient meetings, promoting health awareness and medical education.

The Center conducts phase II, III, and IV clinical trials in many fields of medicine, particularly in neurology, working with global and local Sponsors and CROs. We provide full operational, administrative, and medical support.

SPECIALIZATIONS AND STAFF

VITAMEDICUM MEDICAL CENTER – CLINICAL RESEARCH CENTER CONDUCTS CLINICAL TRIALS IN THE FOLLOWING AREAS:

- Neurology
- Cardiology
- Pulmonology
- Endocrinology
- Rheumatology
- Dermatology
- Psychiatry



STAFF AT THE CENTER:

- Medical specialists: 14
- Coordinators: 2
- Nurses: 4
- Pharmacists: 2
- Physiotherapists: 2
- Dietitians: 2
- Medical receptionists: 3
- Data entry specialists: 2

ADDITIONAL INFORMATION:

- All Investigators hold specialization in their respective medical fields.
- All staff members have professional CVs, refreshed annually, containing required information.
- All staff have experience in conducting clinical trials.
- All staff have completed training in clinical trial planning and conduct (including GCP).
- Team members responsible for biological sample shipment hold IATA certificates.

QUALITY

Feasibility response time under 48 hours
Strict Standard Operating Procedures (SOPs) implemented
Data entry into EDC systems within 48 hours
Personalized approach
Transparency and full documentation at every stage
Dedicated project manager

CONTRACTING & NEGOTIATION TIMELINES



AVERAGE CONTRACTING TIME – 4 WEEKS
from receiving contract proposal to signature



AVERAGE BUDGET NEGOTIATION TIME – 4 WEEKS
from receiving budget proposal to finalization



IMAGING DIAGNOSTICS

The Center ensures access to the full range of imaging examinations:

- MRI
- CT
- PET
- X-ray

Imaging is performed by an external vendor contracted directly by the Center, ensuring high-quality imaging and fast turnaround times.

LABORATORY SERVICES AND SAMPLE PROCESSING

- Ability to collect biological material 24/7
- Full sample processing and logistics
- Wide range of laboratory tests



SITE EQUIPMENT

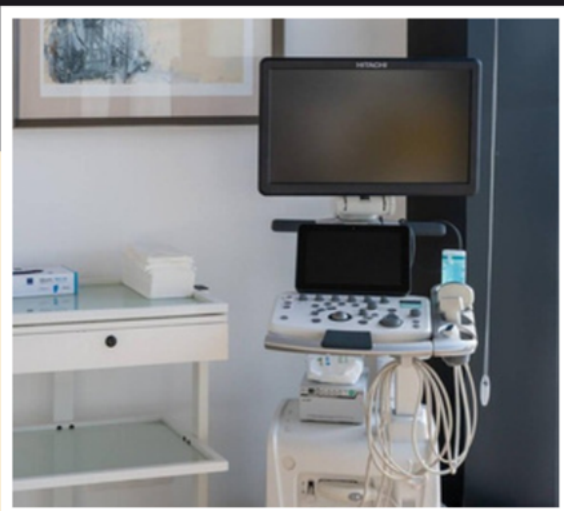
SAMPLE STORAGE AND PROCESSING EQUIPMENT

- -70°C freezer
- Refrigerated centrifuge
- 2–8°C refrigerator
- Sample preparation workstations

DIAGNOSTIC & MEDICAL

- Laminar flow hood for sterile drug preparation
- Thermometers for monitoring temperatures of:
 - investigational product storage (15–30°C)
 - sample storage (-20°C / -70°C)
 - sample storage (2–8°C)
- 12-lead ECG
- 2 Holter ECG devices
- ABPM device
- 2 ultrasound machines (linear, convex, sector probes)
- Glucometers
- Pulse oximeters
- AED defibrillator
- Multiparameter patient monitor
- Manual and automatic blood pressure monitors
- Scale with height measure
- UV procedure lamp
- EMG/ENG
- Emergency kit

All equipment has up-to-date certifications and is validated according to regulations

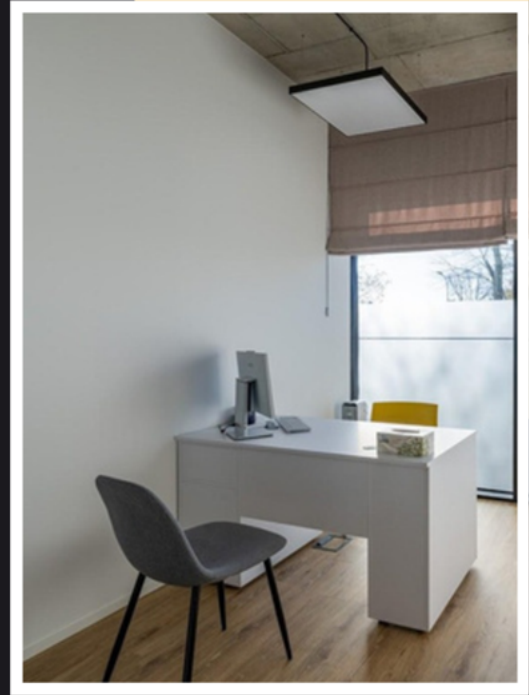


SITE EQUIPMENT

FACILITY RESOURCES

The Center has facilities that comply with Good Clinical Practice (GCP) and all legal requirements.

- Number of medical offices: 8
- Number of procedure rooms: 2
- Storage area for IMP / on-site pharmacy
- Storage area for study materials, including lockable cabinets for study documentation
- Functional rooms for monitor visits
- Separate room for investigational product administration and patient visits
- Appropriate room for post-administration patient observation



IT INFRASTRUCTURE

- Secure encrypted network
- Electronic patient database
- Remote monitoring capability
- WiFi access for patients, staff, and monitors

PATIENT RECRUITMENT



DATABASE

- Own database of over 20,000 patients
-

COLLABORATION WITH OTHER SITES

- Cooperation with 30 General Practitioners' offices in the Małopolskie, Świętokrzyskie, and Podkarpackie regions
- Cooperation with 40 specialist clinics in the same regions
- Cooperation with 5 specialist hospitals
- Active cooperation with patient organizations

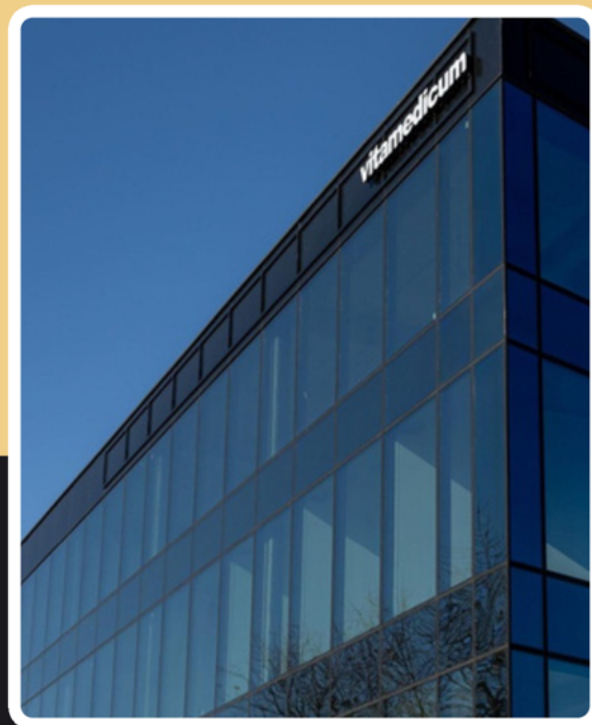
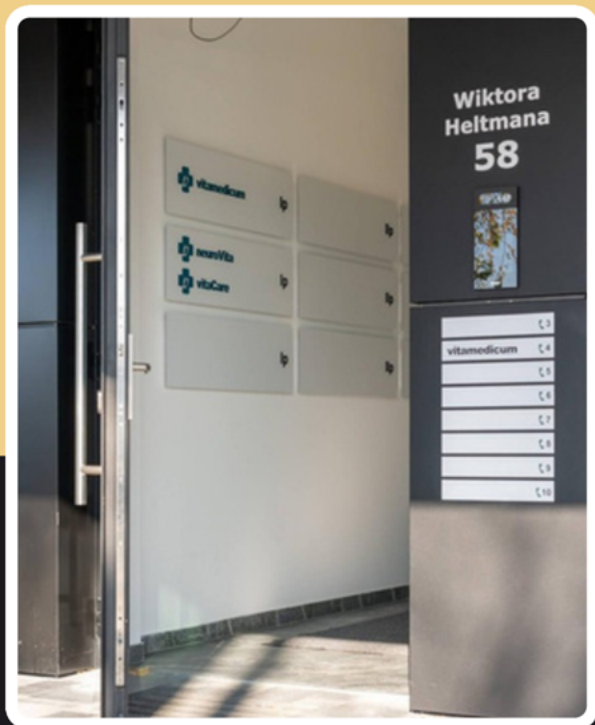


SOCIAL ACTIVITIES

- Educational campaigns
- Active participation in webinars, patient meetings, and educational conferences



CONTACT



MEDICAL DIRECTOR: PAWEŁ WRONA, MD, MBA

ORGANISATION ID: ORG-100055887

LOCATION ID: LOC-100099589

LEGAL DEPARTMENT: LILIANA KOPCZYK, TEL. +48 661 600 900

ADDRESS: WIKTORA HELTMANA 58/LU4, 30-565 KRAKÓW

PHONE: +48 794 995 640

E-MAIL: PAWEL.WRONA@VITAMEDICUM.PL

WWW.VITAMEDICUM.PL/BADANIAKLINICZNE

OPENING HOURS:

MON-FRI: 08:00 – 20:00
SATURDAY: 09:00 – 14:00
